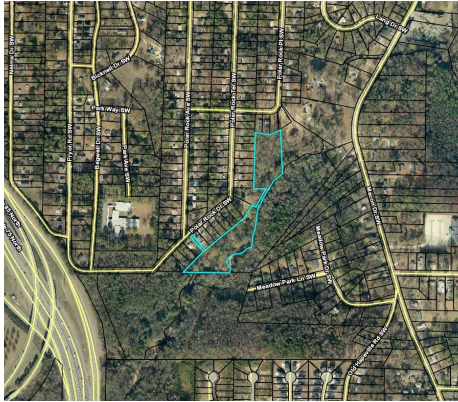




**METRO ATLANTA
LAND BANK**

Affordable Housing
Vibrant Communities
Economic Opportunities

Vacant Lot For Sale-Affordable Housing Requirement



0 Polar Rock Place, Atlanta, 30315

Public: Development opportunity on 4.8 acre lot, conveniently located just minutes away from Downtown Atlanta. Close to Downtown, the airport, Screen Gems Studio, Tyler Perry Studio, Lakewood Amphitheater and so much more.

[Additional details from Tax Assessors Office](#)

Features: Near the Atlanta Beltline, Public Transport, schools shopping, trails/greenway, parks, restaurants sidewalks, and recreation.

Parcel ID#: 14 007000080792

Acres: 4.8

Zoning: R4

Property Class: Residential Vacant

Est. Value: Refer to our Fee Simple Purchase Price Policy

City: Atlanta

County: Fulton

Neighborhood: Lakewood

School Zones:

Elementary: Slater

Middle School: Price

High School: Carver

Legal Description: ON FILE

For more information, contact us at: info@metroatlantalandbank.org or call (404) 525-9336

metroatlantalandbank.org