

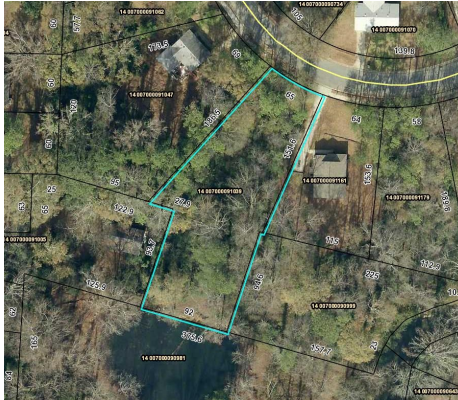


**METRO ATLANTA
LAND BANK**

Affordable Housing
Vibrant Communities
Economic Opportunities

Vacant Lot For Sale –Affordable Housing Requirement

2197 Lang Dr. SW Atlanta, 30315



Public: Development opportunity conveniently located just minutes away from Downtown Atlanta. Close to Downtown, the airport, Screen Gems Studio, Tyler Perry Studio, Lakewood Amphitheater and much more.

[Additional details from Tax Assessors Office](#)

Features: Located in a quite cul-de-sac, close to the Atlanta Beltline, Public Transport, schools shopping, trails/greenway, parks, restaurants sidewalks, and recreation.

Parcel ID#: 14 007000091039

Acres: .53

Zoning: R4

Property Class: Residential Vacant

Est. Value: Refer to our Fee Simple Purchase Price Policy

City: Atlanta

County: Fulton

Neighborhood: Polar Rock

School Zones:

Elementary: Slater

Middle School: Price

High School: Carver

Legal Description: ON FILE

For more information, contact us at: info@metroatlantalandbank.org or call (404) 525-9336

metroatlantalandbank.org