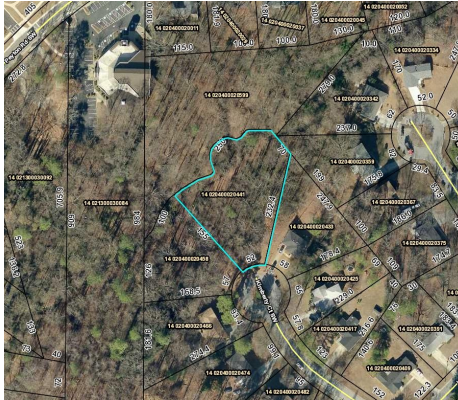




**METRO ATLANTA
LAND BANK**

Affordable Housing
Vibrant Communities
Economic Opportunities

Vacant Lot For Sale - Affordable Housing Requirement



312 Kimberley Ct. SW, Atlanta, GA 30311

Public: Development opportunity conveniently located just minutes away from Downtown Atlanta. Only 1 mile from Marta Station, close to bike paths, and convenient access to I-285 and I-20 .

[Additional details from Tax Assessors Office](#)

Features: Located on the Atlanta Beltline, Public Transport, schools shopping, trails/ greenway, parks, restaurants sidewalks, and recreation center.

Parcel ID#: 14 020400020441

Acres: .76

Zoning: R3

Property Class: Residential Vacant

Est. Value: Refer to our Fee Simple Purchase Price Policy

City: Atlanta

County: Fulton

Neighborhood: Peyton Forest

School Zones:

Elementary: Peyton Forest

Middle School: Young

High School: Mays

Legal Description: ON FILE

For more information, contact us at: info@metroatlantalandbank.org or call (404) 525-9336

metroatlantalandbank.org