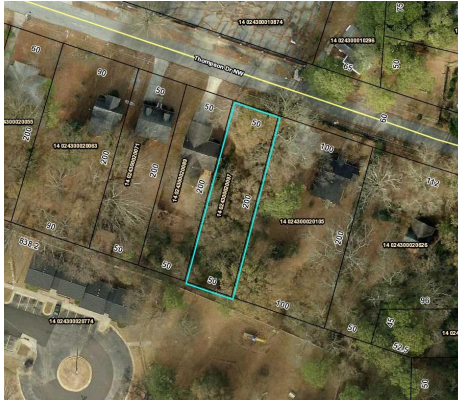




**METRO ATLANTA  
LAND BANK** | Affordable Housing  
Vibrant Communities  
Economic Opportunities

## Vacant Lot For Sale –Affordable Housing Requirement



### 3482 Thompson Dr. NW 30331

**Public:** Excellent opportunity to come and build the perfect home in an amazingly central location. Convenient access to both I-20 & I-285. The lot is conveniently located close to shopping centers, providing easy access to retail and essential services.

[Additional details from Tax Assessors Office](#)

**Features:** Near the Atlanta Beltline, Public Transport, schools shopping, trails/greenway, parks, restaurants sidewalks, and recreation.

**Parcel ID#:** 14 024300020097

**Acres:** .23

**Zoning:** R4

**Property Class:** Residential Vacant

**Est. Value:** Refer to our Fee Simple Purchase Price Policy

**City:** Atlanta

**County:** Fulton

**Neighborhood:** Adamsville

**School Zones:**

Elementary: Harper-Archer

Middle School: John Lewis Invictus Academy

High School: Douglass

**Legal Description:** ON FILE

For more information, contact us at: [info@metroatlantalandbank.org](mailto:info@metroatlantalandbank.org) or call (404) 525-9336

[metroatlantalandbank.org](http://metroatlantalandbank.org)